

Self Briefing Template

Sample of previous Self Briefings to show what should be included and how it can be presented to make it easier for Contest

Directors and to standardize the presentation.

Items in Red MUST be included.

Contents of this document

1. Index Page
2. Title Page
3. Airfield Layout, and information; elevation, runway orientation and numbers,
7. Contest Site Boundaries
10. Airfield layout showing;
 - a) Important buildings; Registration Office, Briefing Room, Technical Inspection, Café, Bar
 - b) Glider and Trailer Tie Down, and Container location
 - c) Scales
 - d) Vehicle Parking
 - e) Team Huts
 - f) Camping
16. Radio Frequencies to be used during the Contest
18. Map of Release areas
22. Map of Start Points
24. Map of Finish Ring
25. Diagram of how to grid, including route over scales
29. Take off and Landing Patterns for runways in use for;
 - Normal Launch
 - Launch Failure
 - Direct landing
 - Circuit
 - How to leave the runway

LAKE KEEPIT

ELEV 1150

FULL NOTAM SERVICE NOT AVBL

NSW

UTC +10

YKEP

S 30 53.4

E 150 31.6

VAR 11 DEG E

UNCR

AD OPR Lake Keepit Soaring Club, 234 Keepit Dam Rd,
Keepit, NSW, 2340. Email: manager@keepitsoaring.com. PH
02 6769 7514. Website: www.keepitsoaring.com.

PASSENGER FACILITIES

Drinkable water/TX 02 6742 0069/AC



ATS COMMUNICATIONS FACILITIES

FIA BRISBANE CENTRE

127.1

CTAF 132.25

ADDITIONAL INFORMATION

1. To maintain communications with other ACFT, please call 132.25 - callsign "Keepit Base".
2. Kangaroo hazard exists.
3. Gliding OPS - Winch Launching.

CHARTS RELATED TO THE AERODROME

WAC 3357.

OK

Montluçon Guéret



ATERRISSAGE A VUE Visual landing

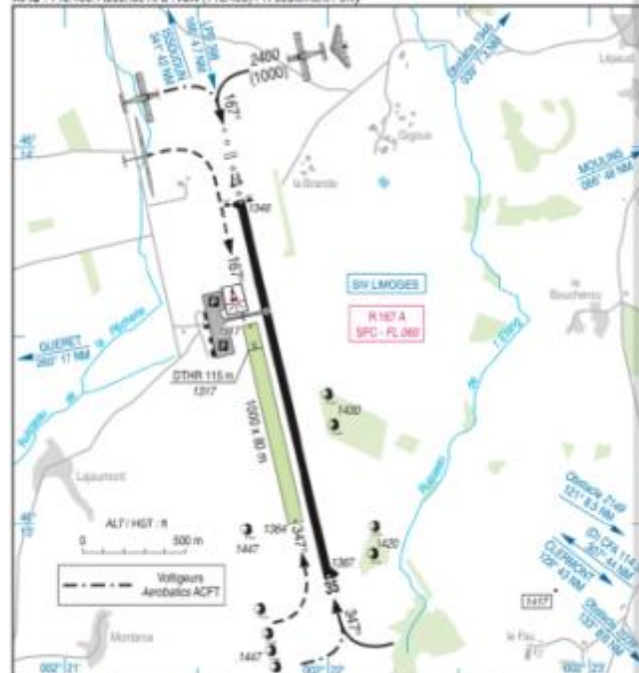
Ouvert à la CAP
Public air traffic
08 OCT 20

MONTLUÇON GUÉRET
AD 2 LFBK ATT 01



ALT AD : 1367 (49 hPa)
LAT : 46°13'34" N
LONG : 002°21'46" E
LFBK
VAR : 0° (15)

APP : NIL
TWR : NIL
APIS : 118.400 Absence ATIS : AIA (118.400) FR seulement / only

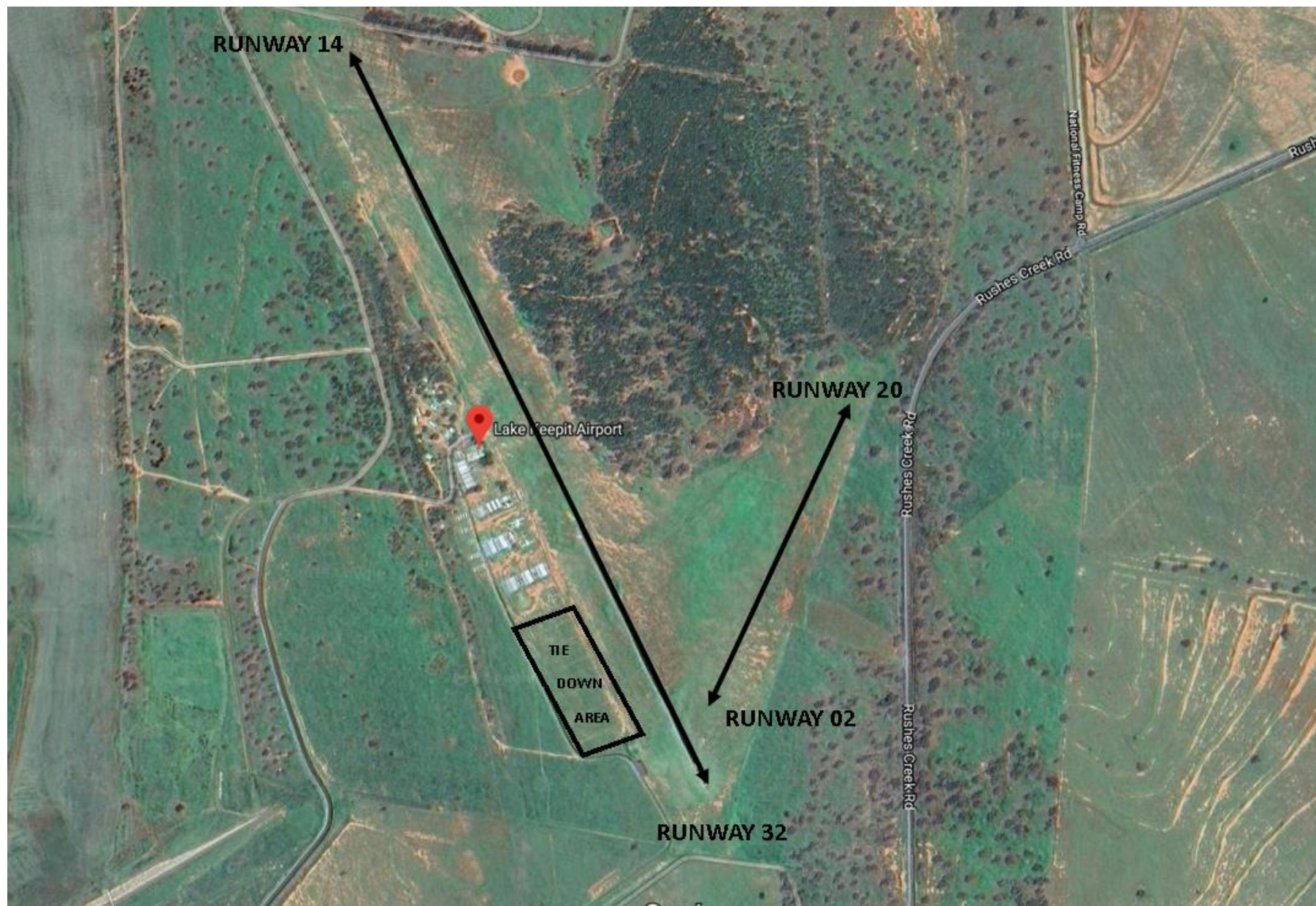


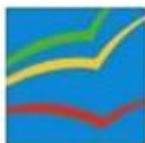
RWY	QFU	Dimensions Dimension	Nature Surface	Resistance Strength	TODA	ASDA	LDA
17 35	167 347	1900 x 45	Revêtement Paved	20 FIC/WU	1900 1900	1900 1900	1900 1900

Aides lumineuses :
H/B RWY 17/35
H ligne APCH 420 m RWY 17
PCL (voir TXT 01)

Lights aids :
LH/LIL RWY 17/35
LH APCH line 420 m RWY 17
PCL (see TXT 01)

Competition site	Montluçon-Guéret Airfield
ICAO code	LFBK
Coordinates	46°13'34" N 002°21'46" E
Frequency	118,400 Mhz

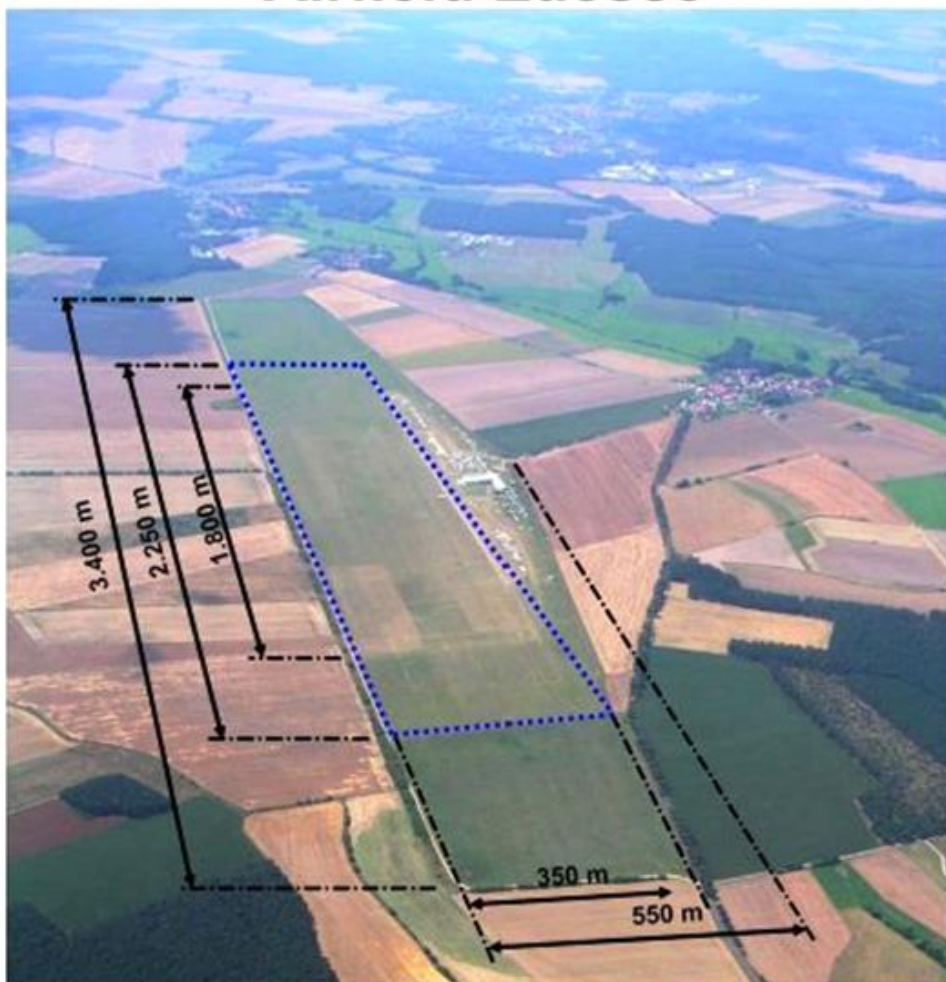




30th WORLD GLIDING CHAMPIONSHIPS 2008
OPEN - 18M - 15M - CLASSES



Airfield Luesse



..... Contest Site
Boundary



Contest Site Boundaries

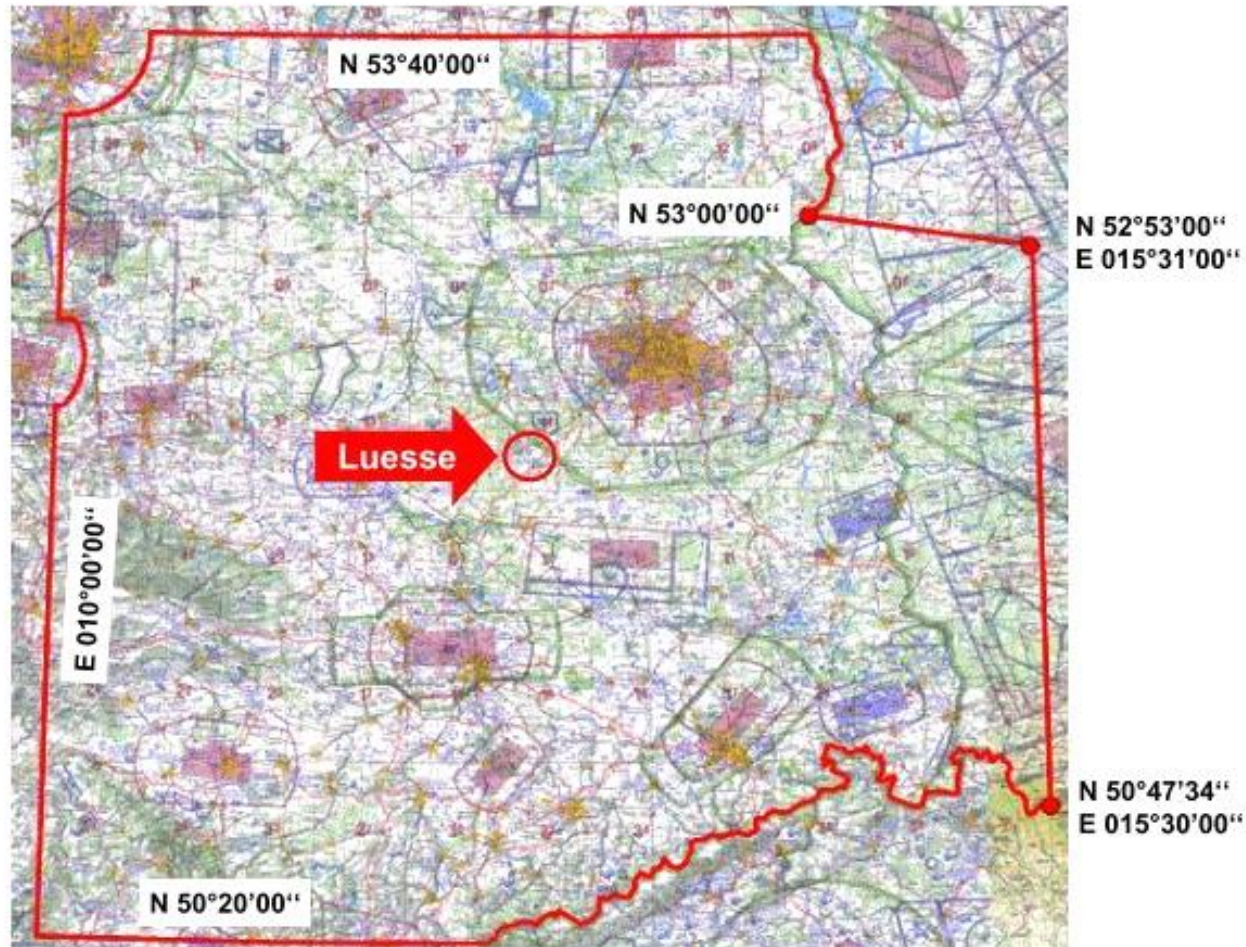




30th WORLD GLIDING CHAMPIONSHIPS 2008
OPEN - 18M - 15M - CLASSES



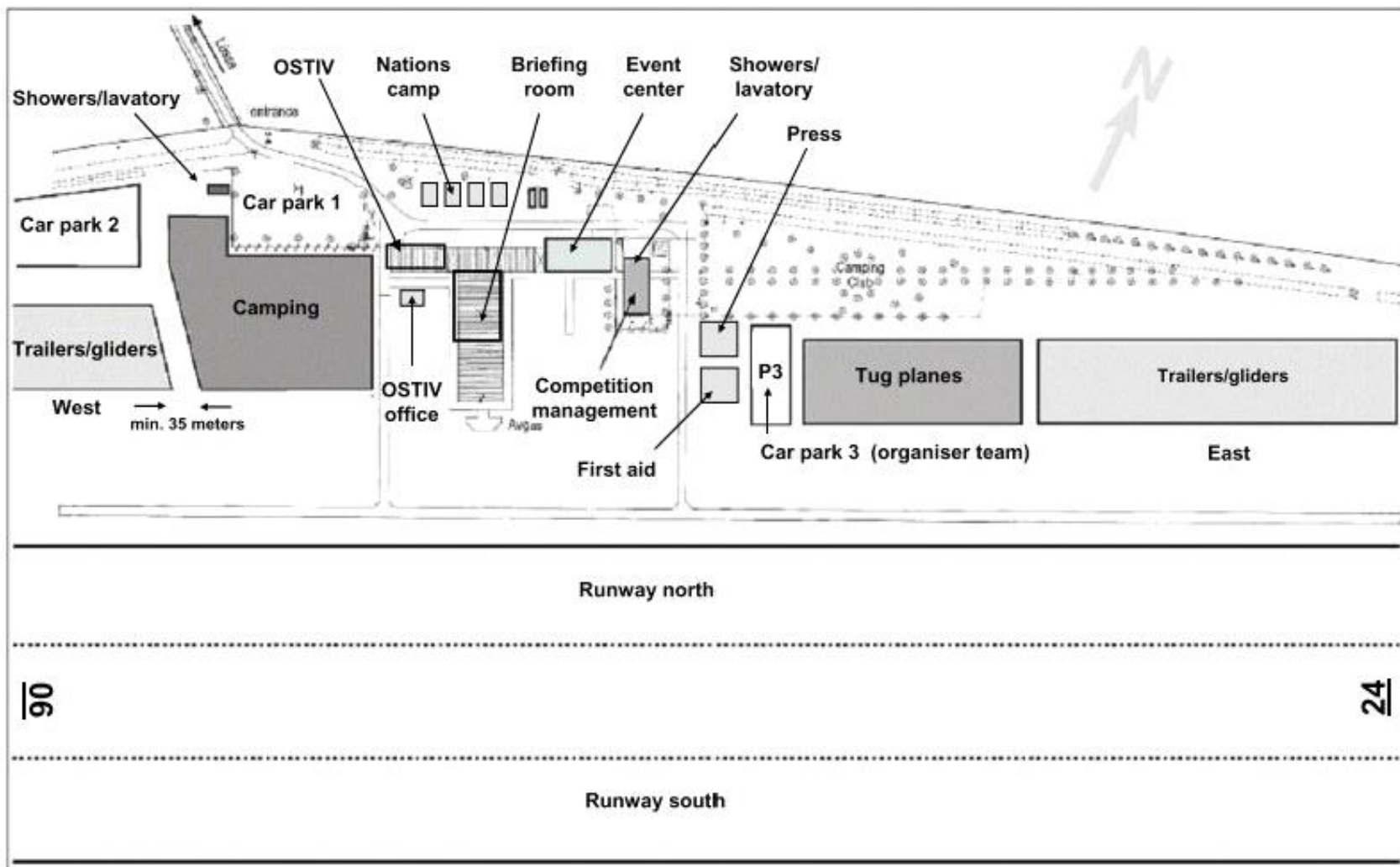
Contest Area Boundary





30th WORLD GLIDING CHAMPIONSHIPS 2008

OPEN - 18M - 15M - CLASSES



Club Facilities



14

OFFICE
REGISTRATION
AND
OUTLANDINGS

SCRUTINEERING

32

Glider tie
down

Admin
& Cafe

Technical
Inspection
1 & 2

Briefing
&
OSTIV

Container
parking

Team Huts

★ ★ Weighing

Google Earth





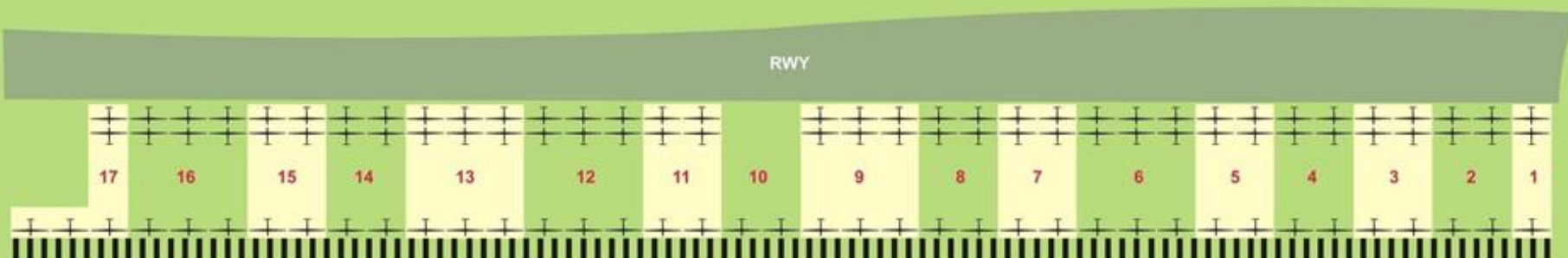
Legend:

- A - Aerorest
- O - Air traffic office
- B - Briefing room
- R - Registration
- P1 - Parking place for camp site
- P2 - Parking place for cars waiting for arrival
- AC - Parking place for engine planes
- T&G - Trailers & gliders
- W - water ballast
- S - Scoring office
- Airport perimeter

GLIDER TIE DOWN



DETAIL PARKING PLACE FOR GLIDERS & TRAILERS



place	country	gliders
1	ROMANIA	3
2	UNITED STATES	6
3	CZECH REPUBLIC	6
4	ITALY	5
	ARGENTINA	1
5	AUSTRIA	5
	SERBIA	1
6	GERMANY	9
7	AUSTRALIA	4
	SOUTH AFRICA	2
8	SLOVAKIA	6
9	UNITED KINGDOM	4
	DENMARK	4
	UKRAINE	1
10	SPAIN	2
11	RUSIA	3
	SWEDEN	3
12	FRANCE	8
	BRAZIL	1
13	FINLAND	4
	HUNGARY	4
	NEW ZELAND	1
14	LATVIA	5
	BELARUS	1
15	POLAND	6
16	SLOVENIA	4
	NETHERLAND	4
17	BELGIUM	4
	SWITZERLAND	2



Radio FREQs allocated for flight safety



For group of teams next frequencies are allocated

- **122,70 MHz** - Romania, Russian Federation, Hungary, Latvia, Serbia
- **123,30 MHz** - United States, United Kingdom, New Zealand, Australia,
- **123,35 MHz** - Czech Republic, Slovak Republic, Slovenia
- **123,40 MHz** - Austria, Germany, Switzerland
- **123,50 MHz** - Italy, South Africa, Ukraine, Belarus, Poland
- **123,55 MHz** - Argentina, Spain, France, Belgium, Brazil
- **123,60 MHz** - Denmark, Finland, Sweden, Netherland

WGC2017 RADIO FREQUENCIES

Teams may use the two official competition frequencies and the allocated frequencies listed below.

- **COMPETITION FREQUENCIES**

- BENALLA CTAF - 125.600 Mhz [Launch, Finish, taxi]
- BENALLA BASE - 122.025 MHz [Start radio, Operation calls, Safety frequency]

- **TEAM RADIO FREQUENCIES.**

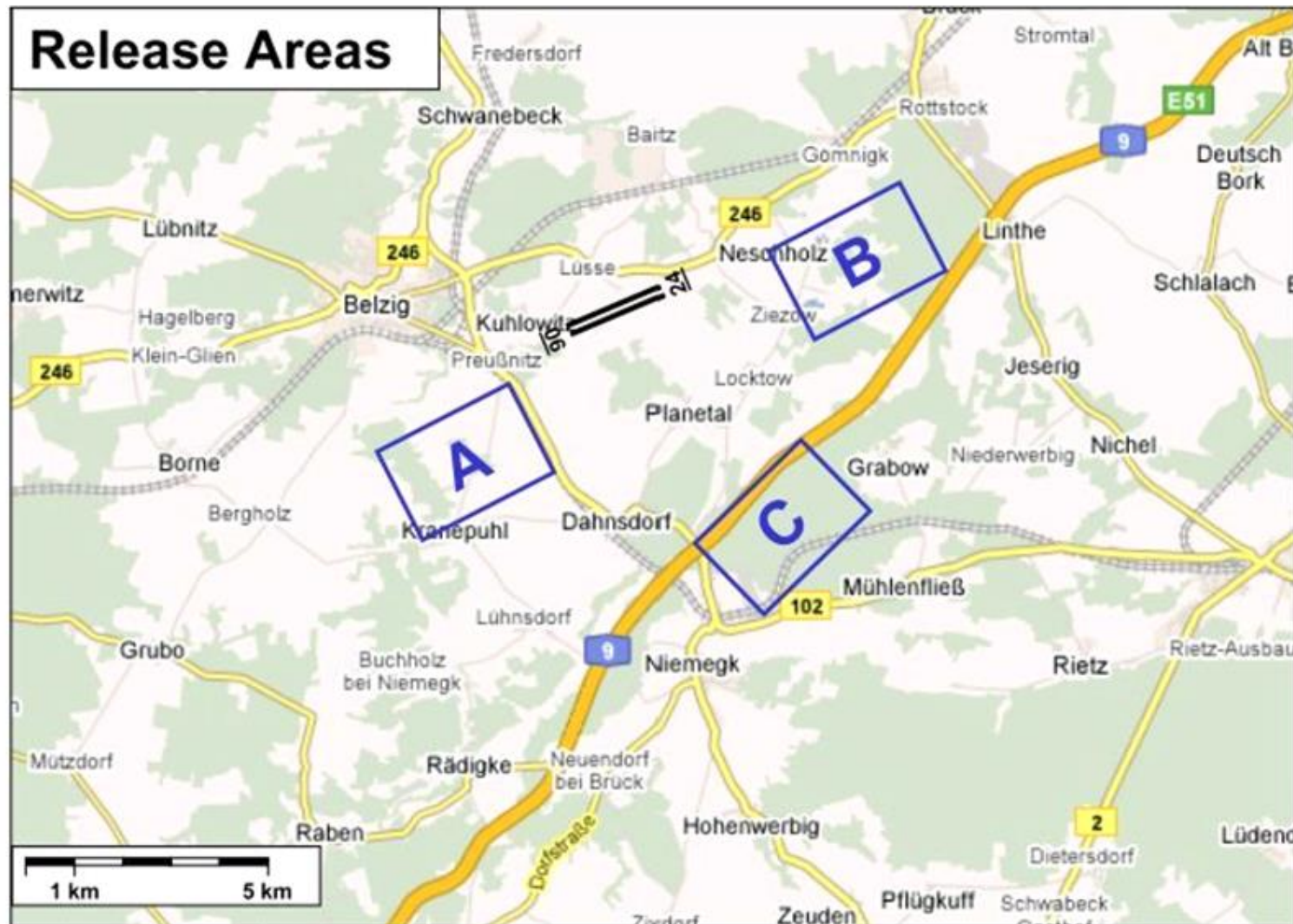
Argentina	122.625
Australia	122.675
Austria	122.725
Belgium	123.325
Canada	123.475
China	123.525
Czech Republic	123.650
Denmark	123.675
Finland	124.475
France	124.825
Germany	127.325
Great Britain	127.375
Hungary	127.475
Italy	127.525
Japan	127.625
Lithuania	127.975
Netherlands	129.125
New Zealand	129.325
Norway	129.525
Poland	130.225
Russia	130.775
Serbia	134.725
Slovakia	134.775
Slovenija	134.825
South Africa	135.875
Sweden	136.025
Switzerland	136.225
USA	136.425

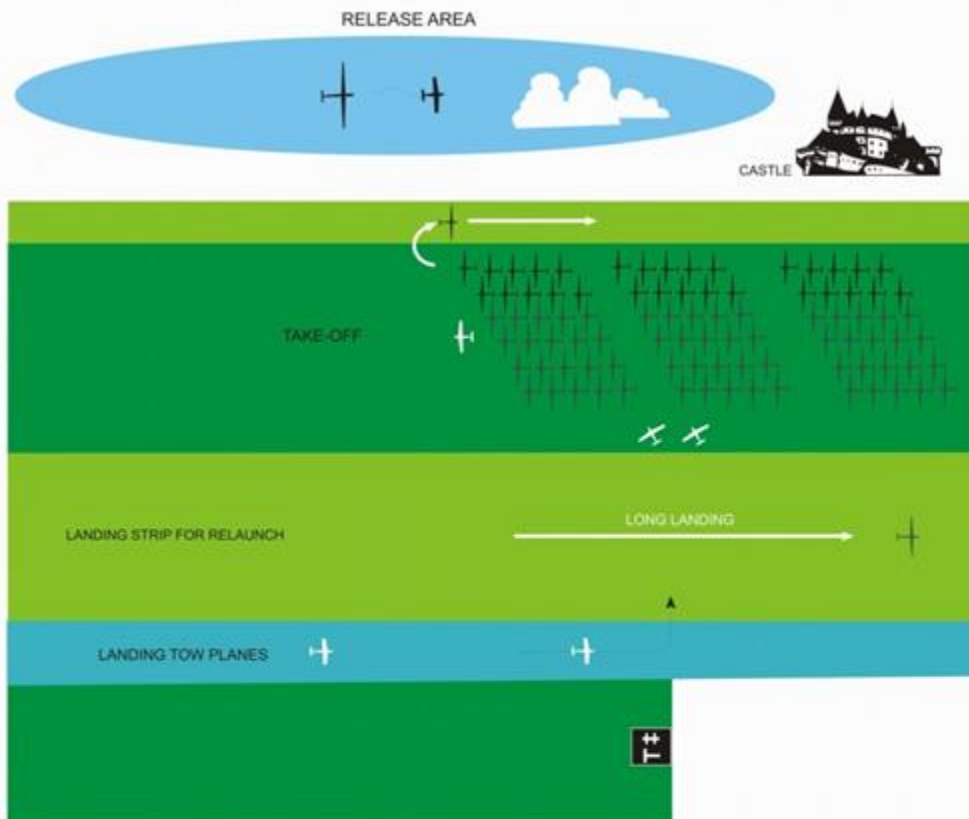




30th WORLD GLIDING CHAMPIONSHIPS 2008

OPEN - 18M - 15M - CLASSES



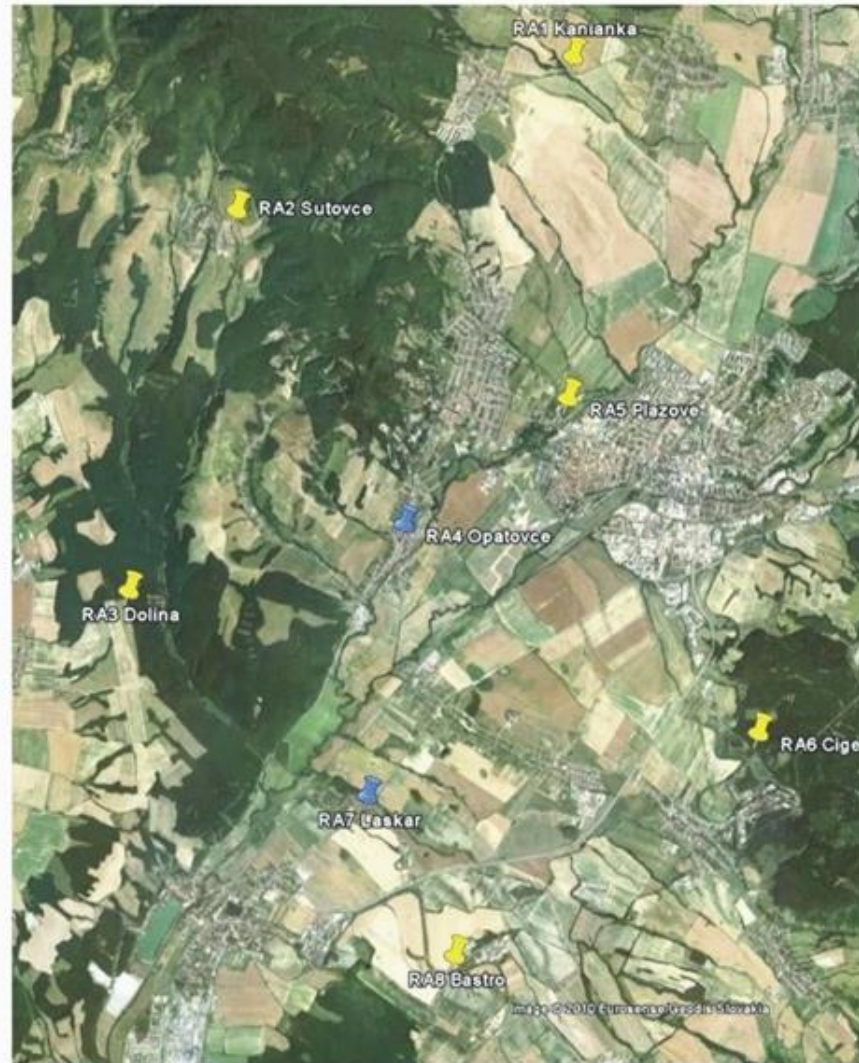


Picture 4

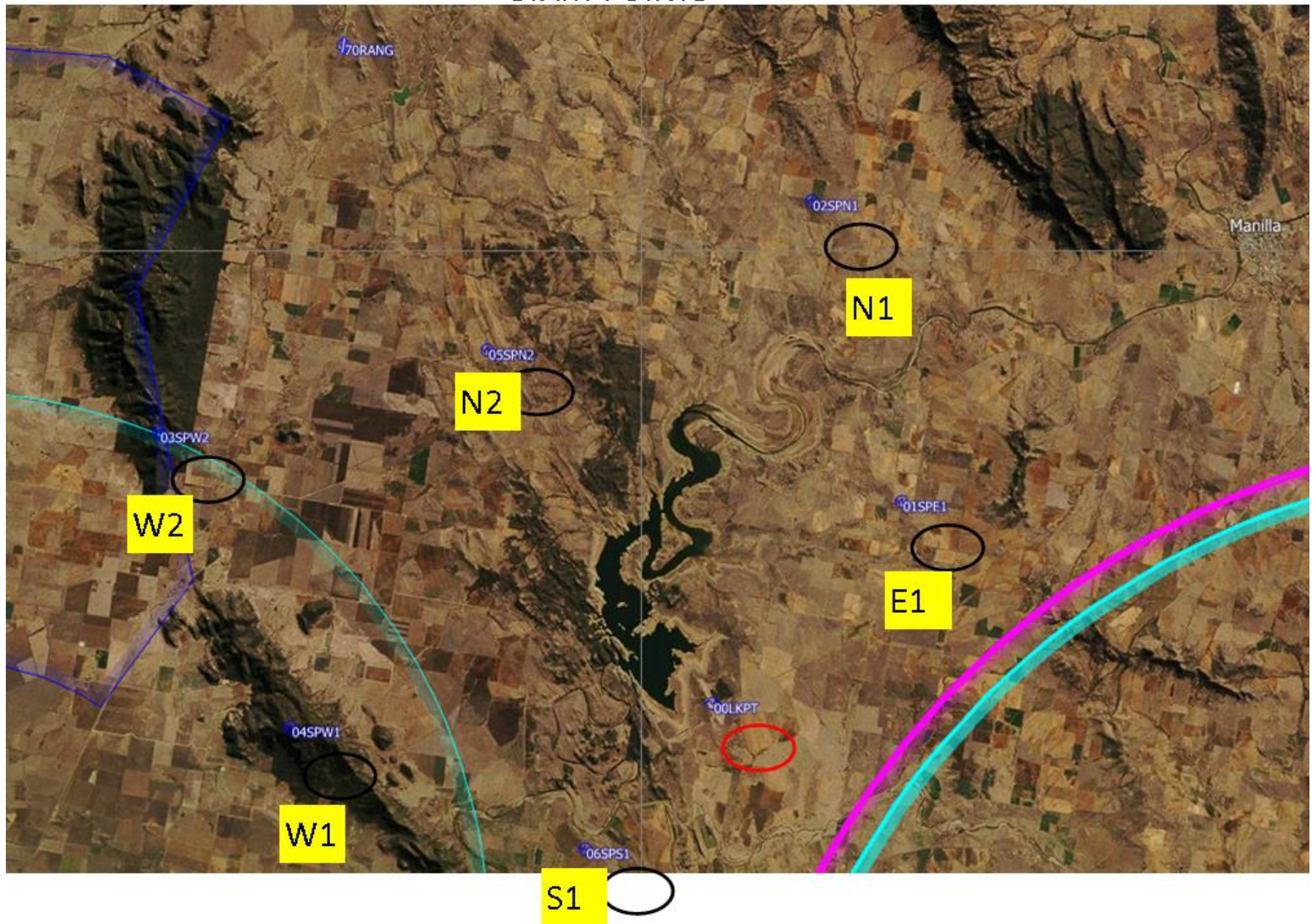
A

RWY 22

LAUNCHING
AND AIR TOW
PROCEDURES
FOR RUNWAY
22
PRIEVIDZA AIRFIELD



START POINTS



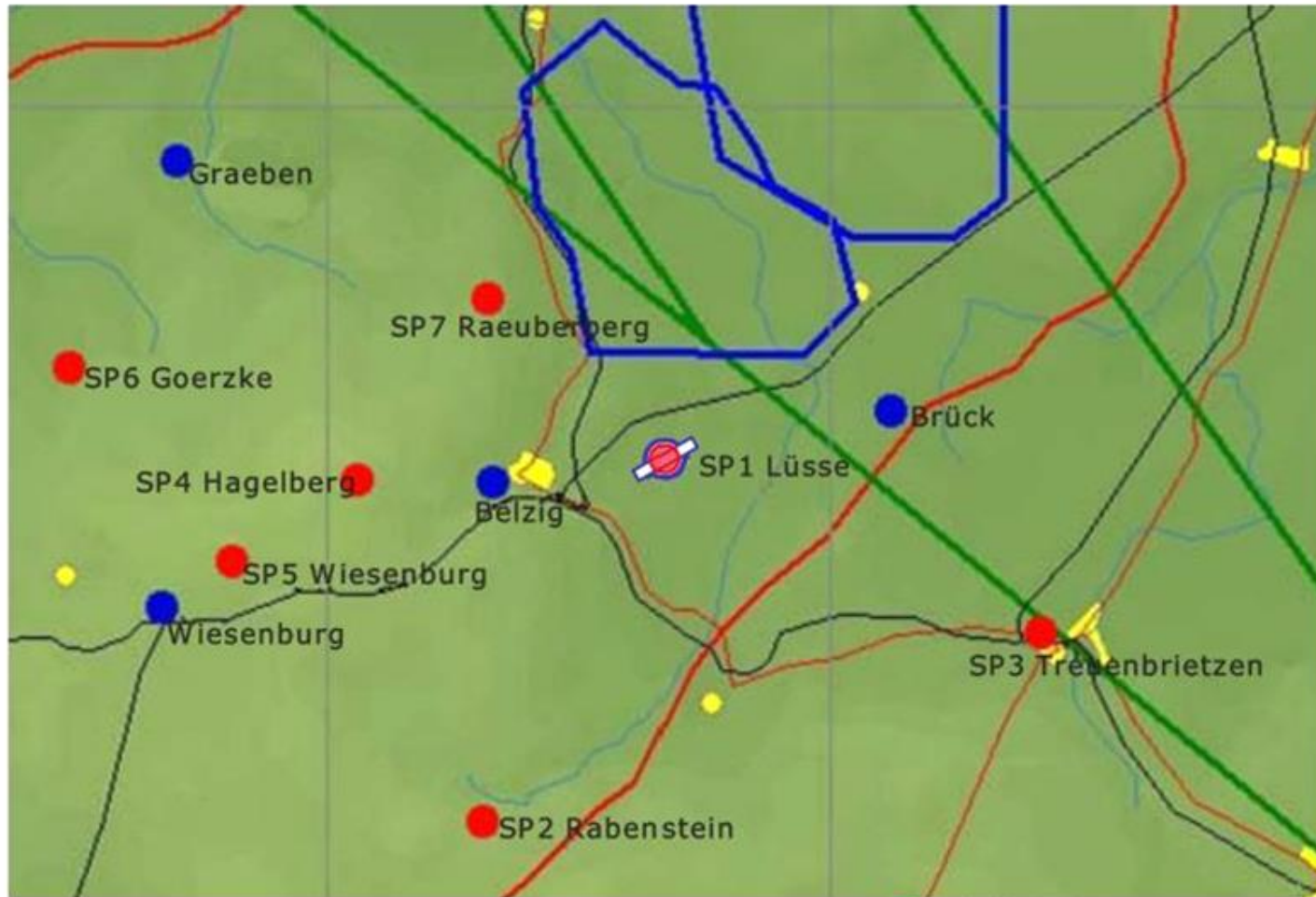


30th WORLD GLIDING CHAMPIONSHIPS 2008

OPEN - 18M - 15M - CLASSES



Start Points



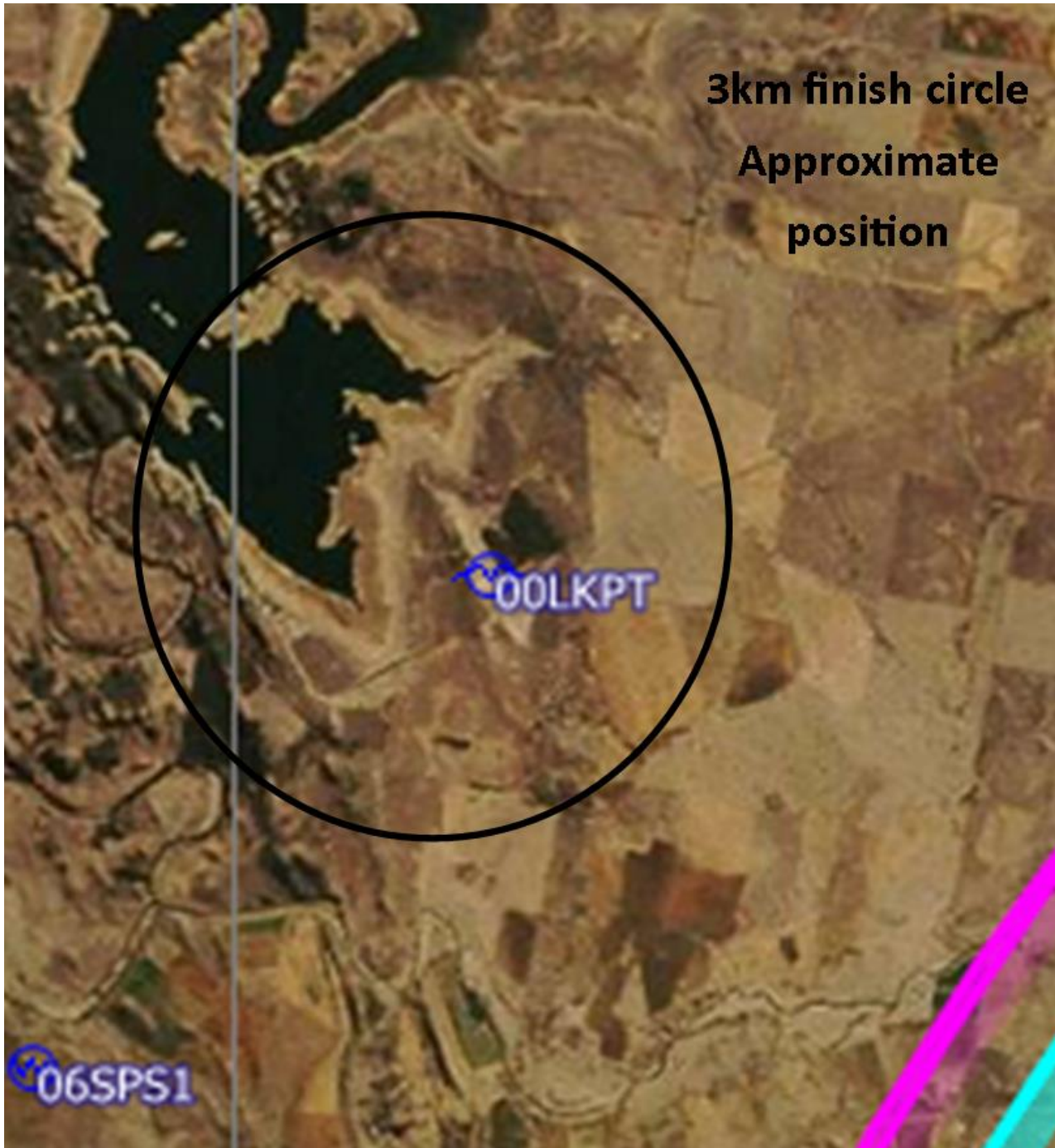
- start points
- turn points

3km finish circle

**Approximate
position**

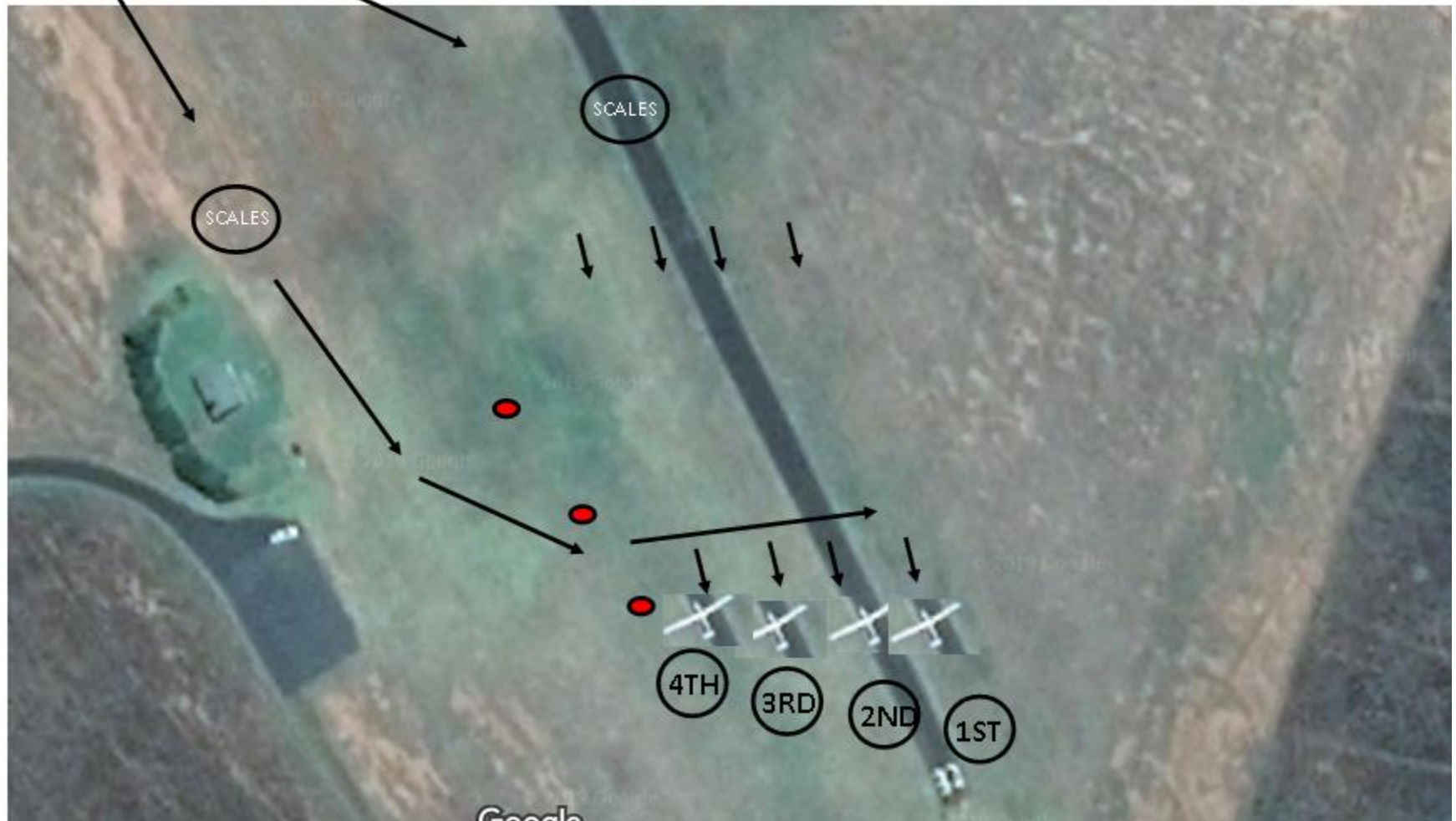
00LKPT

06SPS1



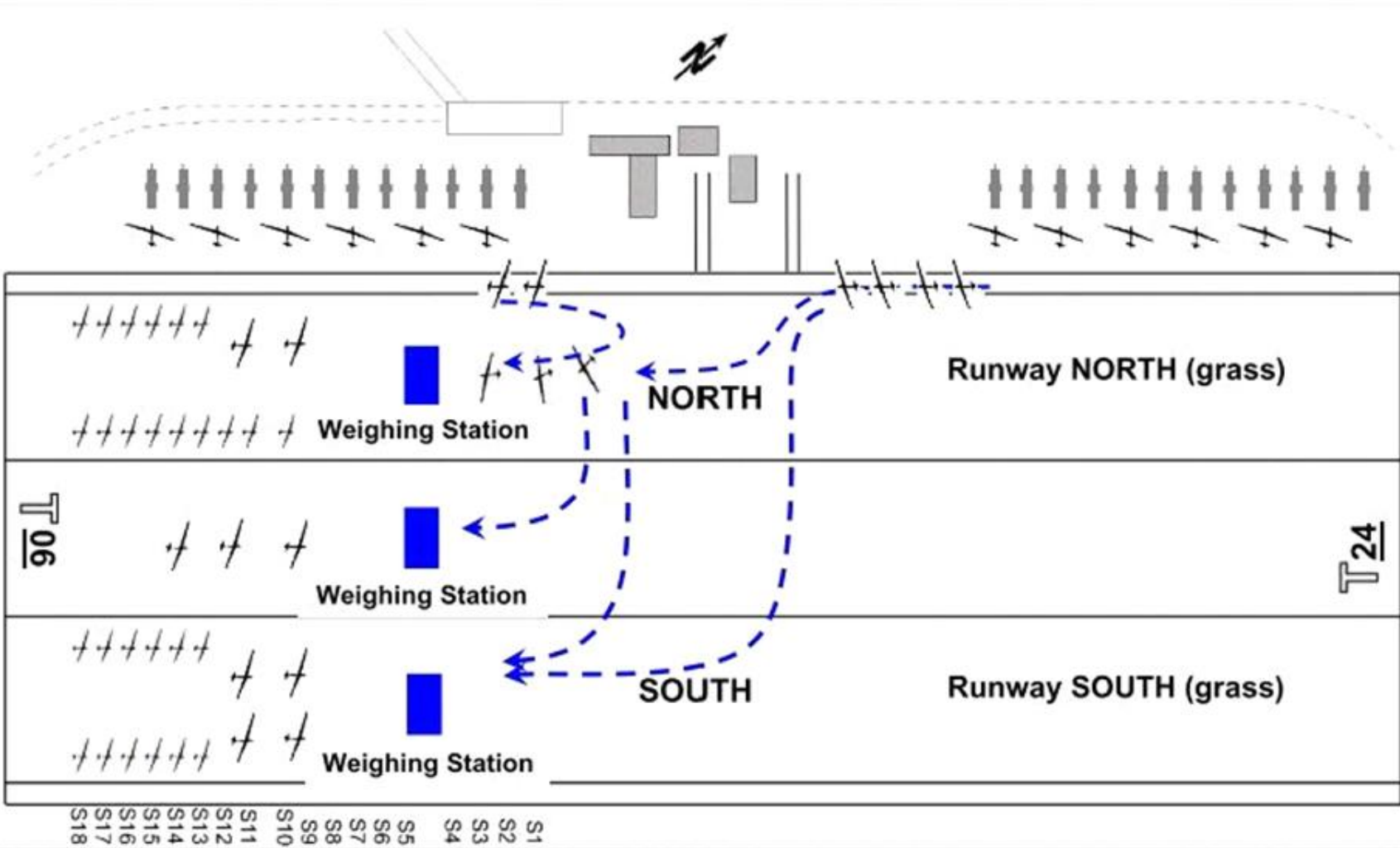
TIE DOWN

GRIDDING





Weight check





VIA SCALES

BITUMEN

2nd

3rd

1st

1

2

3

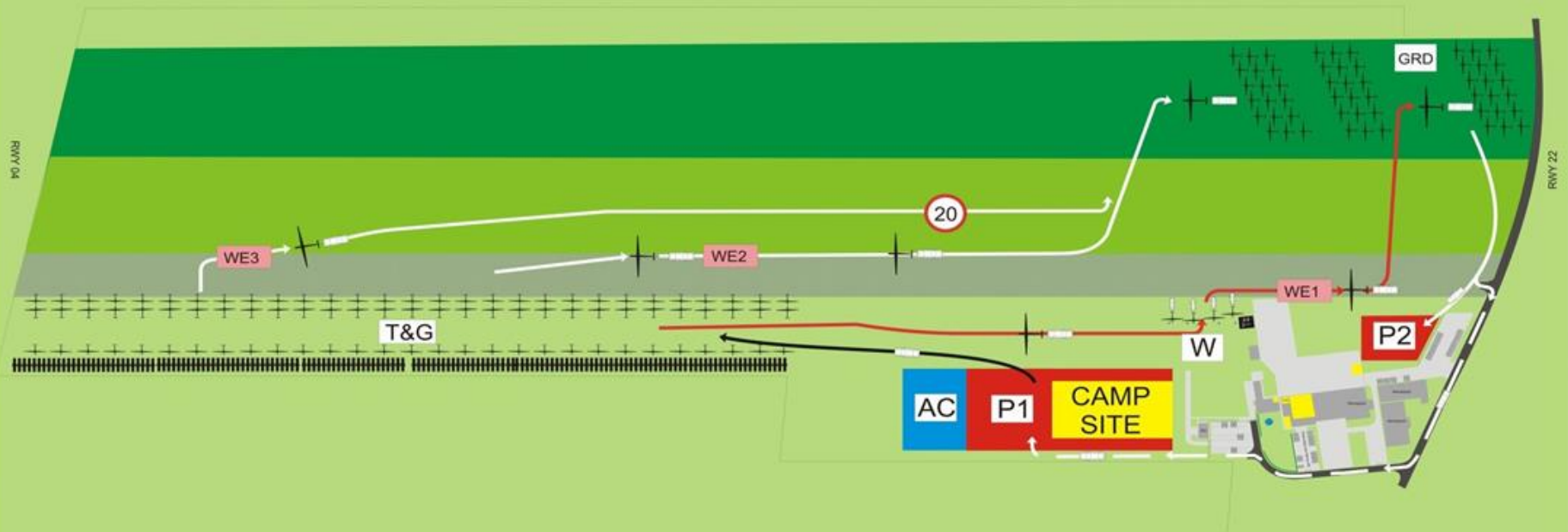
BITUMEN

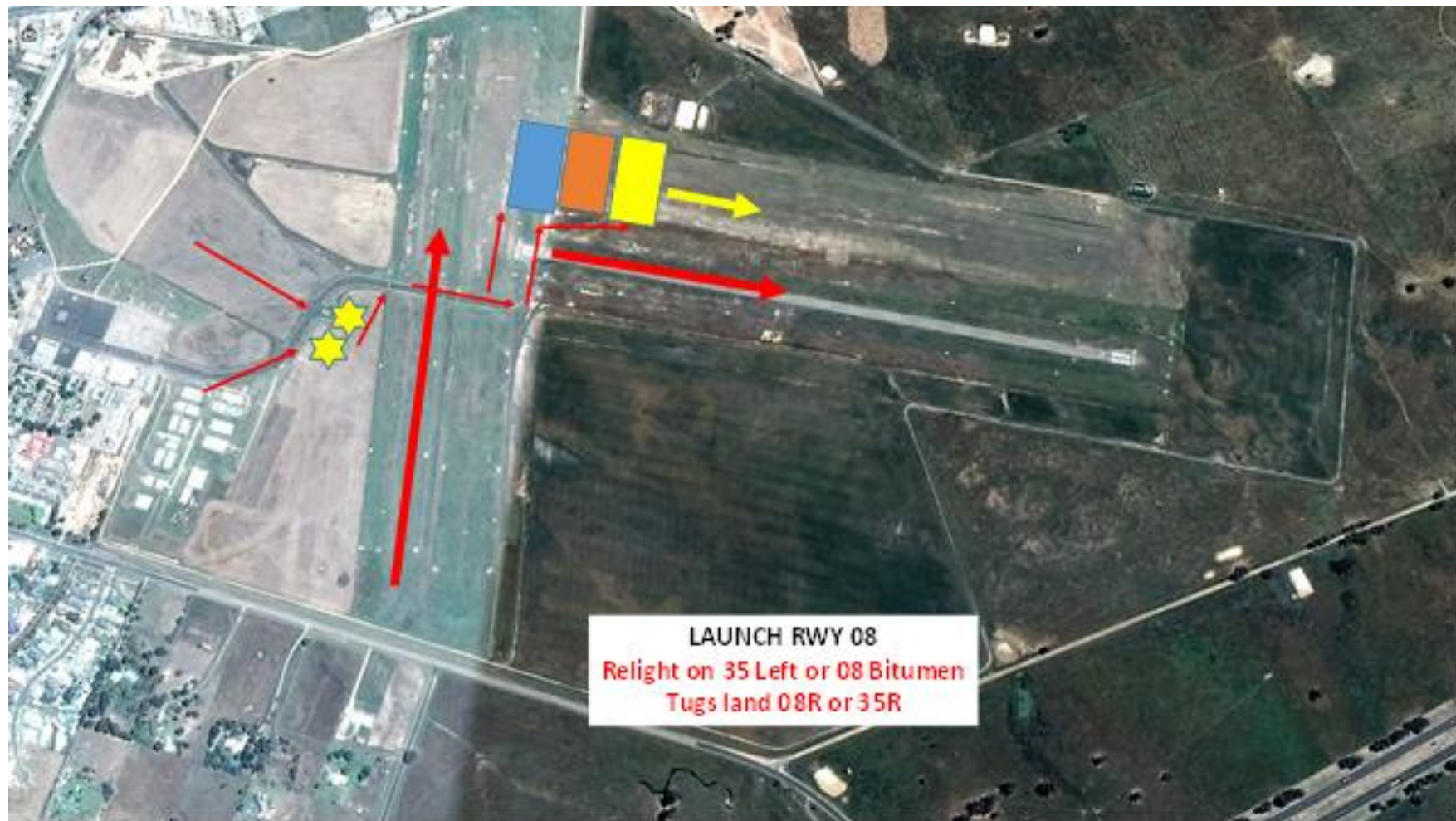
TIE DOWN

Cones are numbered and row order changes each day. Gliders always grid at the same row number.
eg Day 1 row order is 1,2,3
Day 2 row order is 2,3,1

Glider Tow out plan RWY 22

Picture 3a.





LAUNCH RWY 08
Relight on 35 Left or 08 Bitumen
Tugs land 08R or 35R

Arrivals 040 - approach from the south

Picture 8



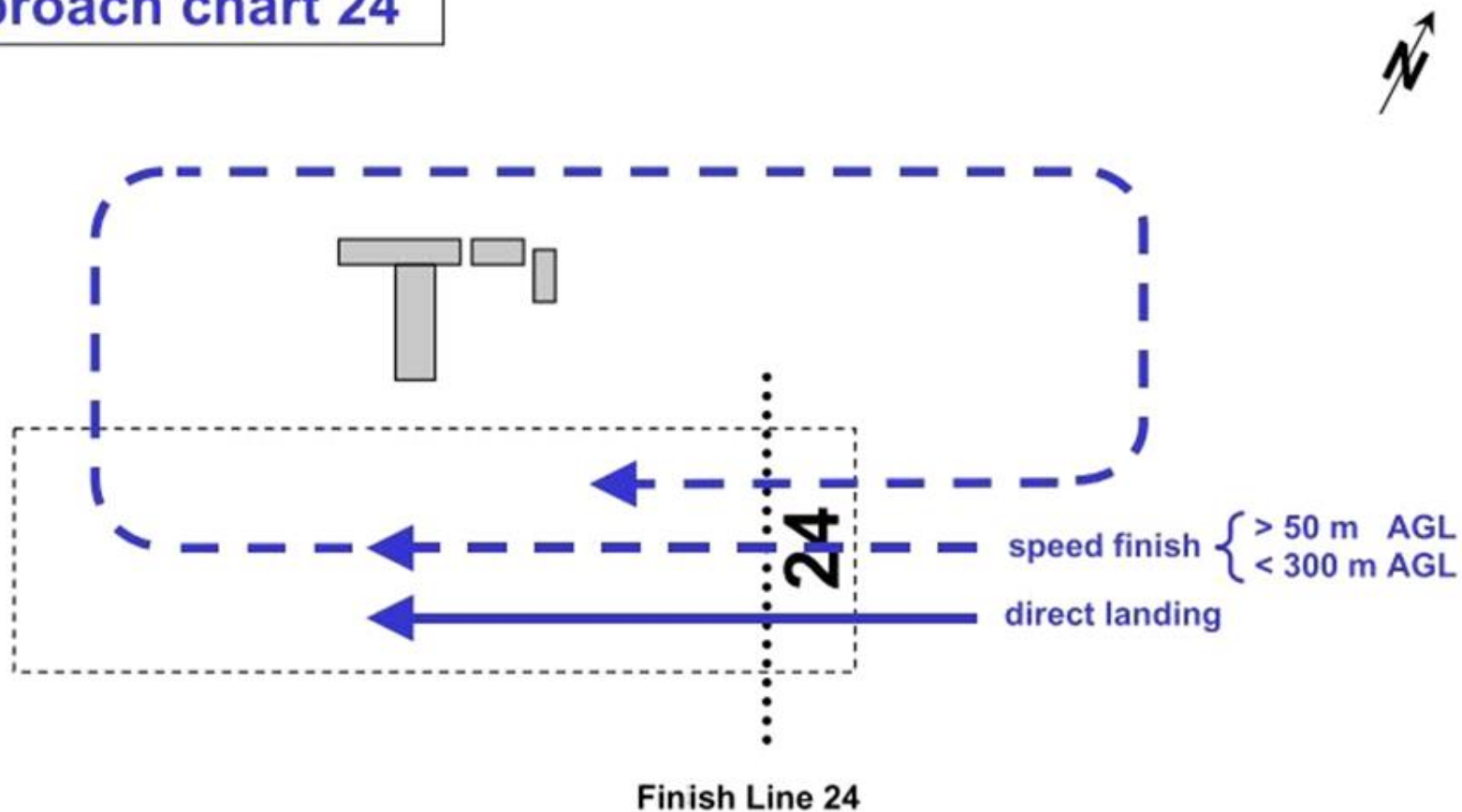


30th WORLD GLIDING CHAMPIONSHIPS 2008

OPEN - 18M - 15M - CLASSES



Approach chart 24



USUAL
LANDING
DIRECTION

IF YOU MUST DO CIRCUIT ON
RUNWAY 14 LAND LEFT

Lake Keepit Airport

LONG
LANDINGS
THANK
YOU :-)

IF LANDING RUNWAY 20,
DO NOT CROSS ONTO
ACTIVE RUNWAY. STOP
BEFORE RED LINE

20

32

National Innes Camp Rd

Rushes Creek Rd

Rushes Creek Rd

Rushes Creek Rd

Rush



30th WORLD GLIDING CHAMPIONSHIPS 2008
OPEN - 18M - 15M - CLASSES



Glider retrieving procedure Watch out for landing gliders !

